

# Total Floor Treatment

  
Jangro

When dosing concentrate chemicals always use the recommended PPE, and always read the labels to check best practice for handling both the undiluted & ready to use solutions.

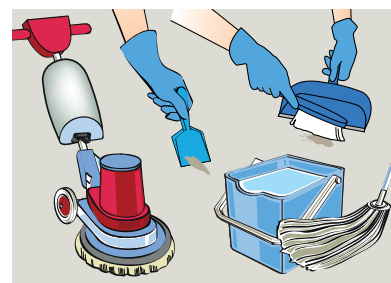
## Product Usage Guide

PREMIUM

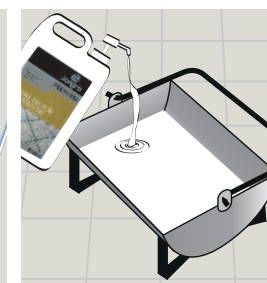
### BD265-5



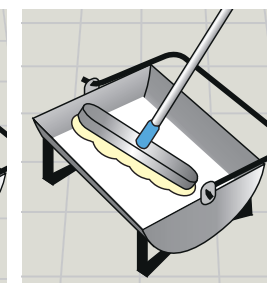
- 1** Use appropriate PPE as indicated in the Safety Data Sheet and place Safety Signs.



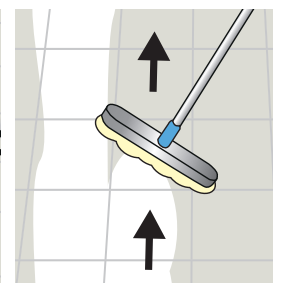
- 2** Prepare the floor, remove all traces of old polish/sealer. Ensure floor is clean dry and neutral.
- Refer to the Jangro Floor Care Chart or the Product Usage Guide for floor polish remover guidance on floor preparation.



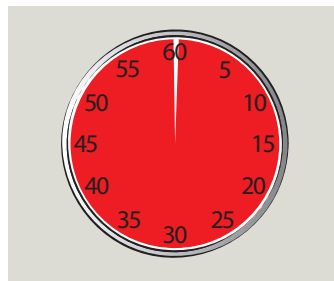
- 3** Pour sealer into bucket or tray. (undiluted).



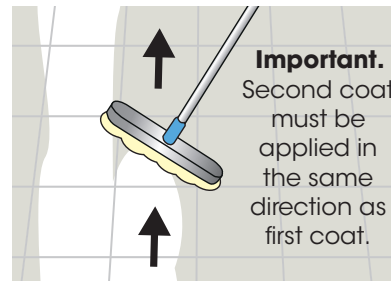
- 4** Place flat mop or applicator into sealer. Remove surplus.



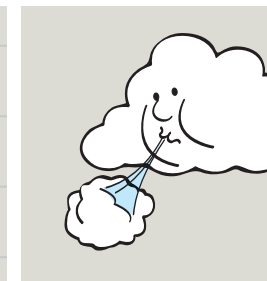
- 5** Apply sealer to dry floor, thinly and evenly in straight lines.



- 6** Leave to dry thoroughly. Approximately 1 hour.



- 7** Ensure floor is free from debris/dust before applying a second coat. Leave a 2.5-5cm gap from the edge.



- 8** Leave to dry. Light traffic 4-8 hours, heavy traffic 24-48 hours.



- 9** Remove Safety Signs.



- 10** For best results, maintain with Jangro Perfumed Floor Maintainer. BD030-5.

### Health & Safety

Please refer to relevant COSHH Safety Data Sheet



Scan for further product details

[www.jangro.net](http://www.jangro.net)