



Contract Glass and Stainless Steel Cleaner

When dosing concentrate chemicals always use the recommended PPE, and always read the labels to check best practice for handling both the undiluted & ready to use solutions.



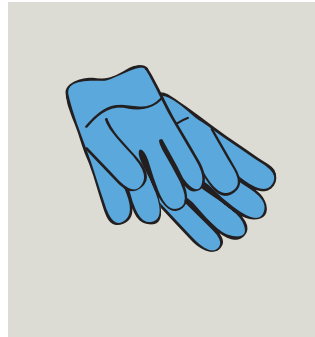
contract

Product Usage Guide

BA817-5



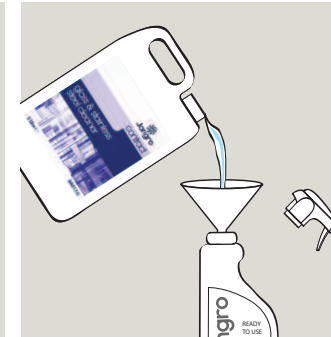
Glass, Mirrors, Chrome, Stainless Steel and Ceramics



1 Use appropriate PPE as indicated in the Safety Data Sheet.



2 Place Safety Signs.



3 Pour solution into sprayer bottle. (undiluted).



4 Spray solution onto cloth or paper towel.



5 Wipe surface to be cleaned and buff with a soft cloth.



6 Remove Safety Signs.

Health & Safety

Please refer to relevant Safety Data Sheet



Scan for further product details



Do not apply in hot direct sunlight or near naked flame.